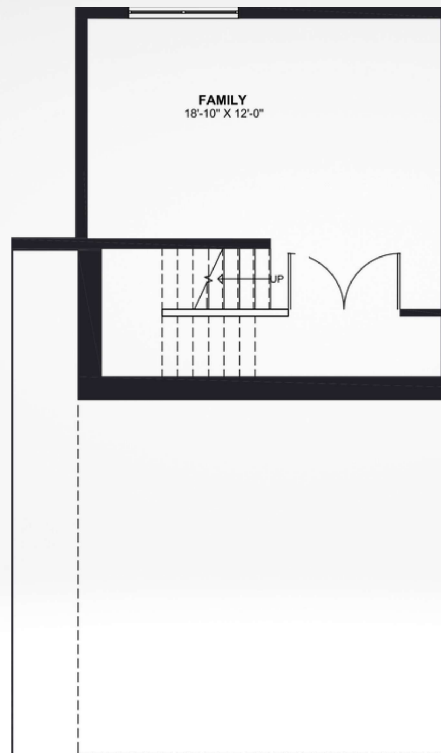


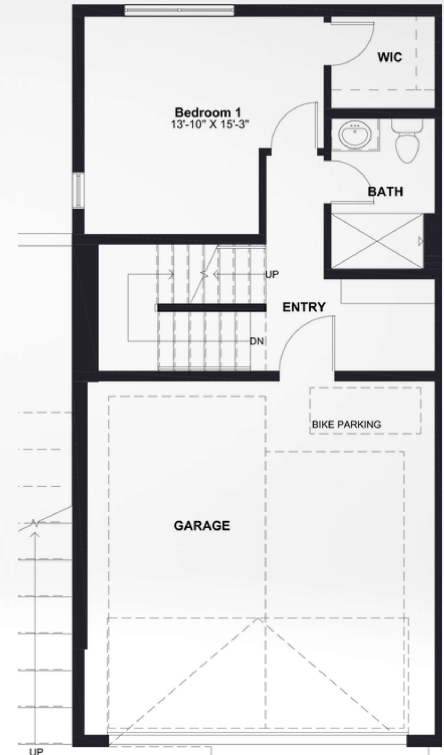
RêVE59

BUILDING TYPE III End Unit

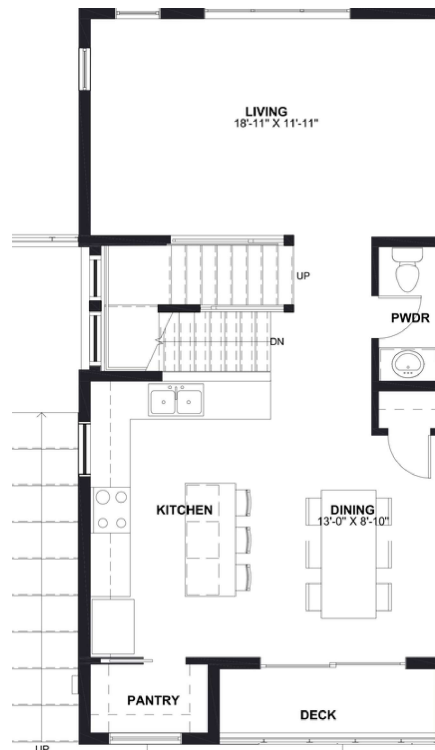
- 5 Beds
- 4 Baths
- 2,324 SQFT
- 2-Car Side-by-Side Garage
- Walk-in Pantry
- 5-Piece Master Bathroom
- Convenient Upstairs Laundry
- Spacious Deck
- Territorial Views
- Near I-405 & Downtown Bothell
- Northshore School District



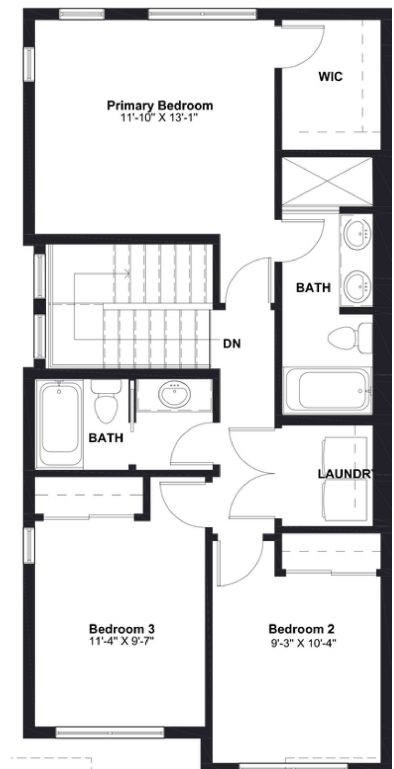
BASEMENT



FIRST FLOOR



SECOND FLOOR



THIRD FLOOR